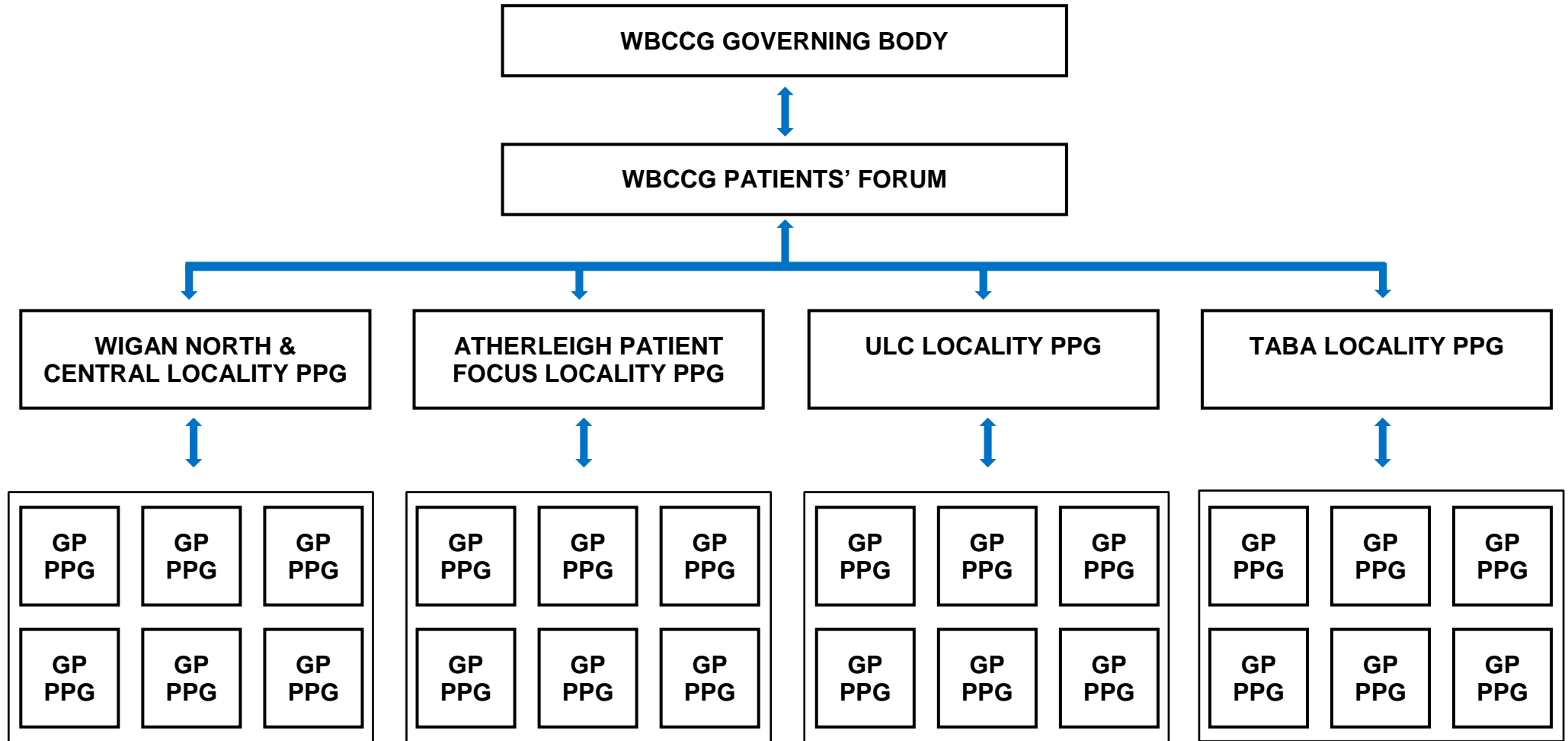


NHS Wigan Borough CCG Continuous Engagement Cycle



- 3 STEP PROCESS:**
- 1** Chairs from PPGs are invited to attend Locality PPGs. They should feed information to the Chair to take to Patients' Forum and take information back to their PPG from the Locality about other PPGs and what was discussed at the meeting (including the Patients' Forum update).
 - 2** Chairs from Locality PPGs are invited to attend the Patient Forum. They should feed information from the locality and feed information back to the locality from the CCG.
 - 3** Three members of the Patients' Forum attend the CCG's Governing Body on a quarterly basis. They take a report and update and challenge the Governing Body on the concerns of the Patients' Forum.