

Boothstown PPG

Dedicated PPG email address:

PPG members have access to all incoming and outgoing communications sent via this address.

To consider: Confidentiality to be respected at all times.

Community Involvement

Inclusive Social Walking Group established in September 2015 with a steady group of regular walkers of around 13. Opportunity to socialise on the walk as well as providing physical activity with tea / coffee, biscuits and toilet facilities and social interaction in St John's Church Lounge afterwards. Most Walk Leaders are PPG members.

Benefits to patients: Walks of approximately one hour duration are paced at ability of walkers and are especially useful for beginners or those with a long term condition who wish to improve their physical agility.

Benefits to the practice: Gives the practice the opportunity to refer patients who would benefit socially and physically from this activity with supportive leaders.

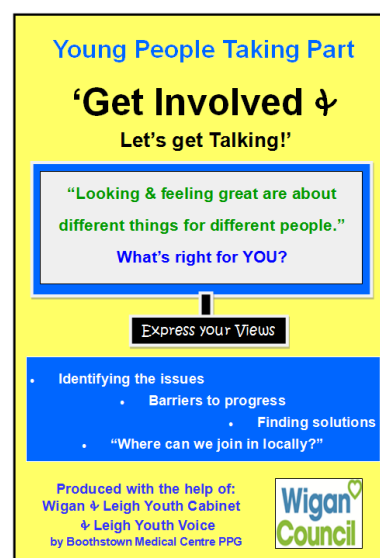
Set up: Trial walk routes with Inspiring Healthy Lifestyles. Walk Leader training provided by Inspiring Healthy Lifestyles. Walks advertised in Inspiring Healthy Lifestyles Calendar Booklet available online or hardcopy.

Liaison with Wigan & Leigh Youth Cabinet to produce a leaflet highlighting issues related to youth identity etc.

Please ask if you would like a copy of the leaflet.

Involved collaboration between PPG members and also a PPG representative attending a Youth Cabinet meeting when there was much discussion about the presentation suitable for young people. Additional communications via email between the Youth Cabinet and PPG.

Benefits to PPG / Practice: Increased awareness of presenting information to young people with the aim of positive take up of ideas.



Front of the leaflet

Many thanks to Boothstown PPG for sharing this case study

Contact: shapeyournhs@wiganboroughccg.nhs.uk or 01942 482711 (Ref: CS5)

Boothstown PPG

Liaison with Leigh Community Trust to produce posters for the waiting room re: topical subjects concerning young people ie Cyberbullying.

Hannah Forbes from Leigh Community Trust attended a PPG meeting. We invited young people from the Practice to attend Leigh Sports Stadium to produce posters to highlight the dangers of Cyberbullying but unfortunately did not have any takers. Determined to not be defeated we asked Hannah to work with the group of young people who regularly attend Leigh Community Trust to design posters for us. These are now displayed in the waiting room at the surgery.

Benefits to young people and the Practice: Greater awareness of the dangers of Cyberbullying.

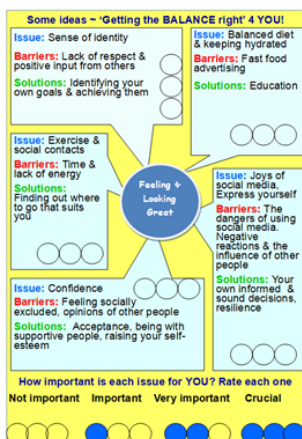
Boothstown Medical Centre /PPG are addressing cross boundary issues - such as promoting available Caring Support from Wigan Borough and Salford.

Representatives from Wigan & Leigh Carers' Centre, Salford Carers and Aspire (Social Prescribing) attended a PPG meeting. There was much discussion between PPG members and guests.

The Practice has a Carers' Champion and support information from both Wigan Borough and Salford are displayed in the waiting room.

Previous activity:

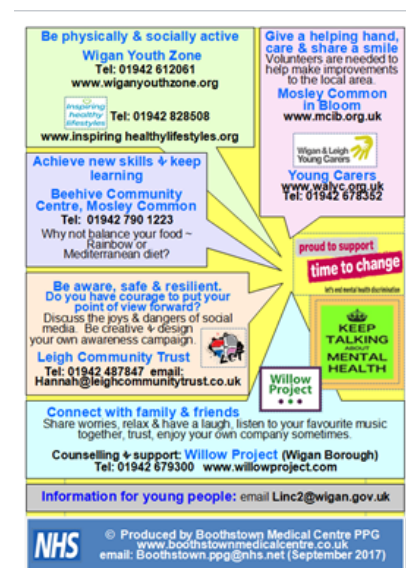
1. Event to give information about local activities (social prescribing).
2. Event: Lived Experiences and Long Term Conditions
3. Event: Liver Testing and Sepsis talk etc
4. Events: CPR training and Bowel Cancer Talk



Middle pages of leaflet



Back page of leaflet



Many thanks to Boothstown PPG for sharing this case study

Contact: shapeyournhs@wiganboroughccg.nhs.uk or 01942 482711 (Ref: CS5)